

*Asadeep*  
QUALITY FABRICS



SB-ALTO

## - SUN BLOCKER -

- **100% BLACKOUT FABRICS** -  
FOR MODERN LIVING  
**BLOCK THE SUN. OWN THE NIGHT.**



SINCE 1979 · MADE IN INDIA

📍 BA-19, MANGOLPURI INDUSTRIAL AREA PHASE II, DELHI, 110034, INDIA

☎️ +91-7373 9292 38, +91-7373929261

**45+ YEARS OF MANUFACTURING EXCELLENCE**

TRUSTED BY GLOBAL BUYERS · EXPORTING WORLDWIDE

**PREMIUM BLACKOUT PERFORMANCE**



BLOCKS 100% LIGHT



REDUCES HEAT



BLOCKS UV RAYS



WRINKLE FREE



COMPLETE PRIVACY



ENERGY EFFICIENT

MADE IN INDIA

EXPORTING WORLDWIDE

# ALTO



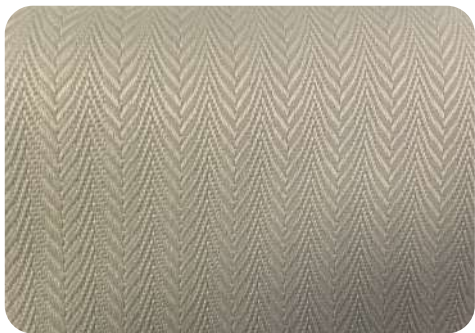
ALTO - 5107



ALTO - 5111



ALTO - 5009



ALTO - 5112



ALTO - 5114



ALTO - 5104



ALTO - 5016



ALTO - 5007



ALTO - 5113



ALTO - 5105



ALTO - 5102



ALTO - 5109



ALTO - 5020



ALTO - 5101



ALTO - 5044



ALTO - 5030



ALTO - 5025



ALTO - 5018



ALTO - 5118



ALTO - 5054



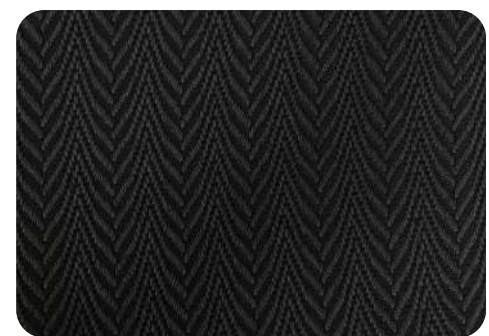
ALTO - 5106



ALTO - 5031



ALTO - 5108



ALTO - 5010

## TECHNICAL INFORMATION

Parameter	Details
Composition	Polyester + Cotton
Width	54"
Abrasion	In excess of 30,000 cycles (800g / 12Kpa) Martindale
Fastness to Light	5+ [BS 1006 (1990)]
Fastness to Rubbing	Wet: 5 Dry: 4.5
Maintenance	Professional cleaning is recommended
Fabric GSM	260
Colour Matching	Batch to batch variations in shade may occur within commercial tolerances

## OPTIONAL TREATMENT

1. Flame Retardant Finish  
BS EN1021-1 : 1994 (Cigarette)  
BS 7176 : 1995 Low Hazard

2. Water Repellent  
AATCC - 118

### AS PER DYEING / PROCESS HOUSE DECLARATION

All Chemicals & Dyes  
Eco Friendly & It Is Not Harmful For Human Health

**ASADEEP FURNISHING PRIVATE LIMITED**  
MANGOL PURI INDUSTRIAL AREA, BA-19,  
PHASE-II, NORTH WEST DELHI



+ 91-6262 2929 57



[www.asadeep.com](http://www.asadeep.com)

# ***DISCLAIMER***

*All fabric colours displayed in this catalogue are digitally rendered for reference purposes only. Due to variations in screen resolution, lighting conditions, and display settings, the actual fabric colour and texture may differ from what is shown.*

*We strongly recommend referring to the physical fabric sample or swatch before making any final purchase decision.*

## ***Please Note:***

- The design scale and pattern representation may not be exact.*
- No claims will be entertained for colour, texture, or design variations between the digital representation and the actual fabric.*