

ITLAY

## TECHNICAL INFORMATION

Parameter	Details
Composition	Polyester
Width	54"
Abrasion	In excess of 50,000 cycles (800g / 12Kpa) Martindale
Fastness to Light	5+ [BS 1006 (1990)]
Fastness to Rubbing	Wet: 5 Dry: 4.5
Maintenance	Professional cleaning is recommended
Fabric GSM	350
Colour Matching	Batch to batch variations in shade may occur within commercial tolerances

## OPTIONAL TREATMENT

### 1.Flame Retardant Finish

BS EN1021-1 : 1994 (Cigarette)  
BS 7176 : 1995 Low Hazard

### 2. Water Repellent

AATCC - 118

## AS PER DYEING / PROCESS HOUSE DECLARATION

All Chemicals & Dyes  
Eco Friendly & It Is Not Harmful For Human Health

**ASADEEP FURNISHING PRIVATE LIMITED**  
MANGOL PURI INDUSTRIAL AREA, BA-19,  
PHASE-II, NORTH WEST DELHI



+ 91-7373 9292 38



[www.asadeep.com](http://www.asadeep.com)

# ITLAY



ITLAY 09



ITLAY 61



ITLAY 60



ITLAY 17



ITLAY 06



ITLAY 44



ITLAY 509



ITLAY 65



ITLAY 507



ITLAY 52



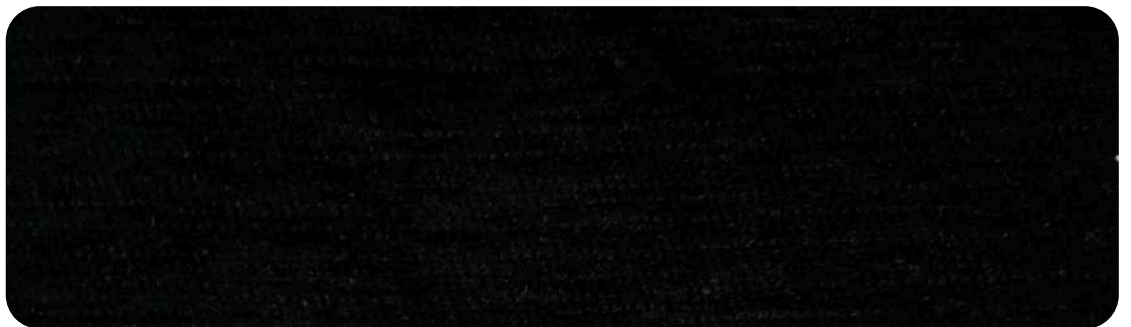
ITLAY 18



ITLAY 508



ITLAY 29



ITLAY 10

# DISCLAIMER

All fabric colours shown in this catalogue are digitally rendered for reference purposes. Due to variations in screen resolution and display settings, actual fabric colour may vary from the digital swatches or images shown.

We strongly recommend referring to the physical fabric catalogue before making any final purchasing decision.

Please Note:

- The design scale depicted may not be accurate.
- No claims will be accepted regarding color or design mismatches between the digital representation and the actual fabric.